

# Termination of Pregnancy statistics 2017

Statistics Jersey: [www.gov.je/statistics](http://www.gov.je/statistics)

## Background

Induced abortion (also referred to as ‘termination of pregnancy’ or T.O.P.) is carried out under the terms of the Termination of Pregnancy (Jersey) Law 1997. There is a legal requirement to notify the Medical Officer of Health of all terminations carried out in Jersey. Statistics Jersey collate and analyse the data derived from these notifications. A full data table is provided in the Appendix.

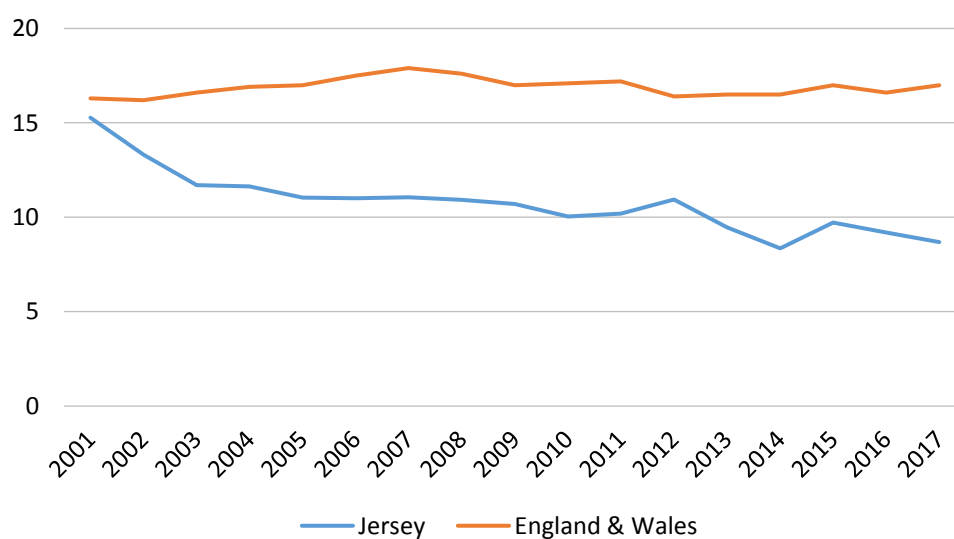
## Overall number and rate

- there were 170 abortions notified as having taken place in Jersey in 2017<sup>1</sup>
- the number of abortions has decreased over the last two decades, with around 130 fewer terminations in 2017 (170) than reported in 2001 (310); a decrease of over forty percent
- the 2017 figure represents a crude abortion rate<sup>2</sup> of 8.7 per 1,000 women aged 15-44 years; the crude abortion rate has declined since 2001 (15.3 per 1,000 women aged 15-44 years)
- the crude abortion rate in Jersey over the period 2013-17 was consistently lower than in England and Wales<sup>3</sup>

Table 1: Number and crude rate (number per 1,000 women aged 15-44 years) of T.O.P. in Jersey and in England and Wales

Year	Jersey		England & Wales	
	Number	Crude rate	Number	Crude rate
2013	190	9.5	190,800	16.5
2014	160	8.4	190,090	16.5
2015	190	9.7	191,010	17.0
2016	180	9.2	190,410	16.6
2017	170	8.7	194,670	17.0

Figure 1: Annual (crude) abortion rate per 1,000 women aged 15-44 years, Jersey and England and Wales



<sup>1</sup> All numbers in this report have been rounded to the nearest 10

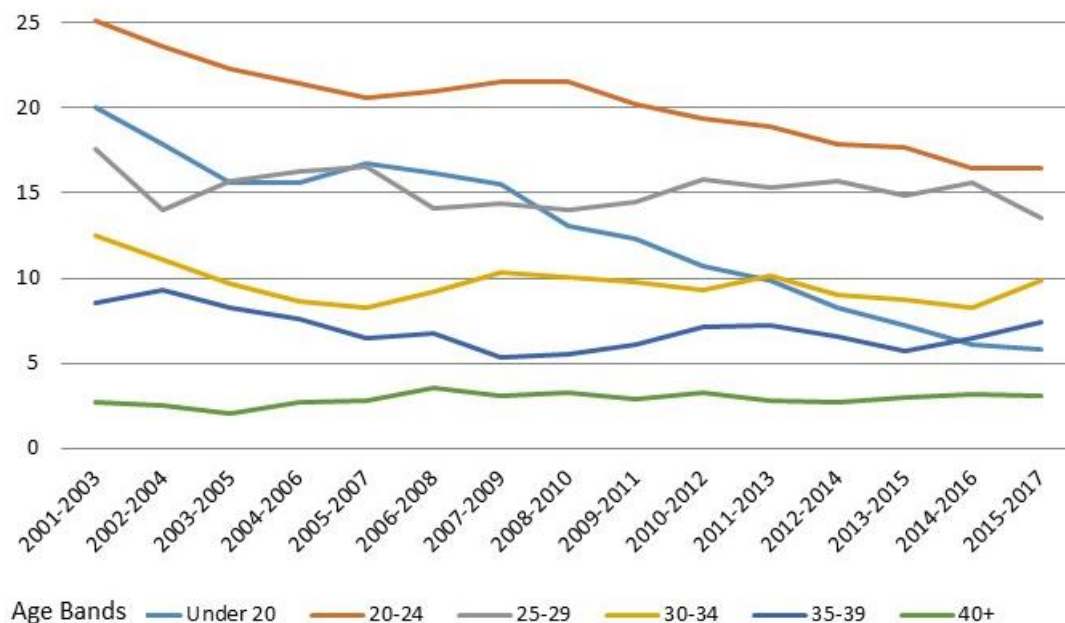
<sup>2</sup> Crude abortion rate is defined as the number of abortions per 1,000 resident women of age 15-44 years per annum

<sup>3</sup> [www.gov.uk](http://www.gov.uk) National Statistics, Abortion Statistics for England and Wales: 2017 (Abortion Statistics : Data Tables)

## By age of woman

- over the last two decades, the rate of terminations recorded for women under 20 years of age and for those aged 20-24 years has fallen in Jersey. Between 2001 and 2017 the abortion rate for women aged under 20 years decreased from 20.0 to 5.8 per annum; for the 20-24 age group the rate decreased from 25.1 to 16.5 per annum over the same period
- for other age groups, the age specific rates of termination have remained similar across the two decades

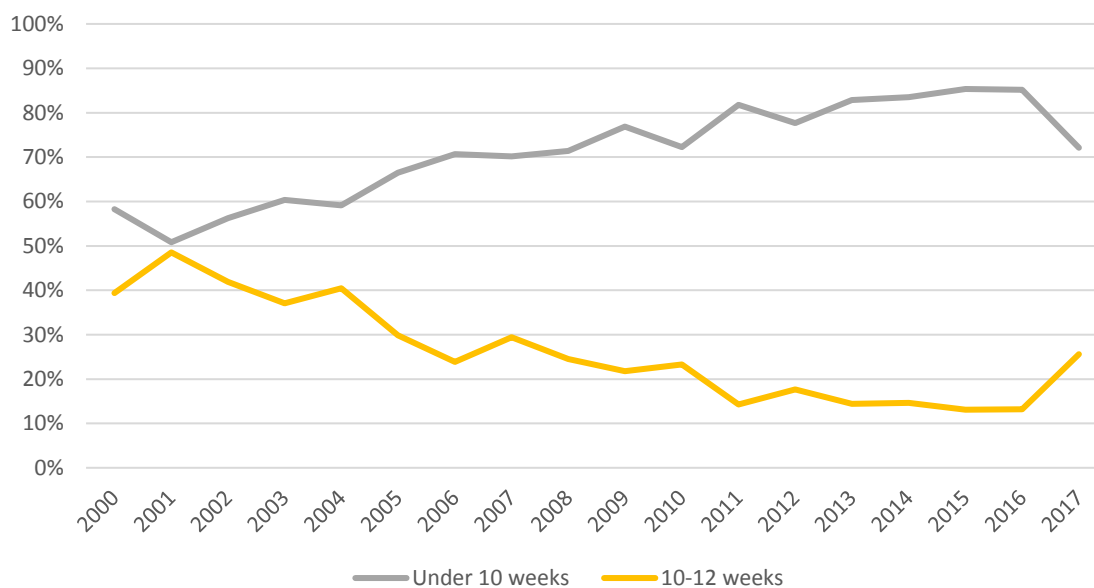
Figure 2: Age specific abortion rates, Jersey 2001-2017 (3-year averages)



## By gestation period

- in 2017 most terminations (72%) were performed at less than 10 weeks gestation. This was 13 percentage points lower than in 2016, and the lowest proportion since 2010
- there was an increase in the proportion of terminations performed at 10-12 weeks, 26% in 2017 compared to 13% in 2016. The proportion in 2017 was the highest recorded since 2007
- the proportion of terminations being performed at over 12 weeks gestation has remained low, at 5% or less over the last decade

Figure 3: Proportion of T.O.P. by gestation period<sup>4</sup>

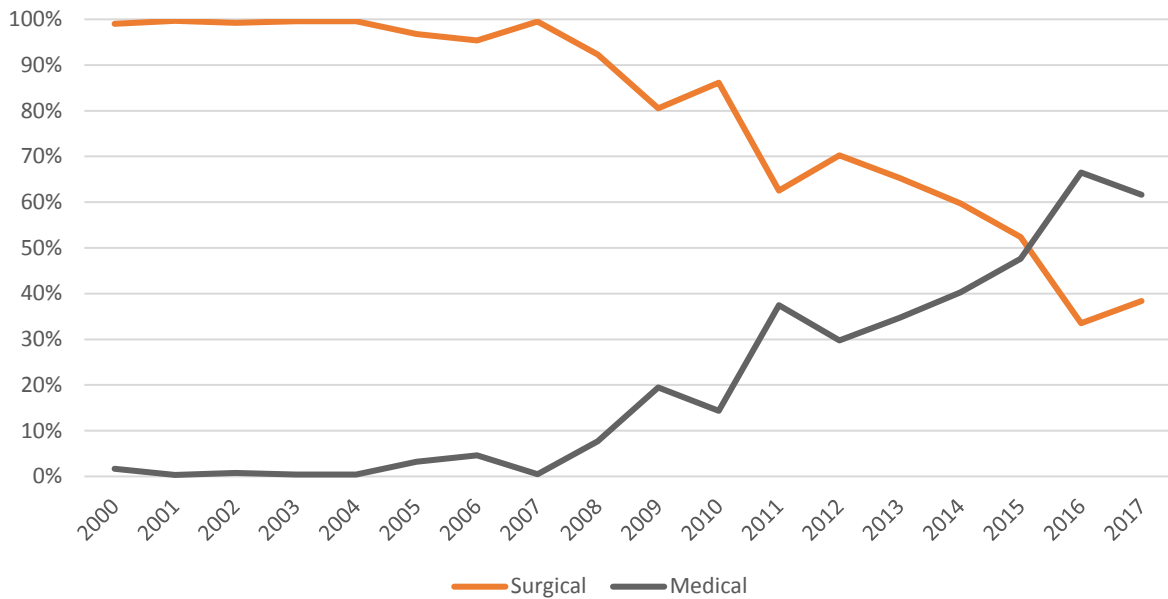


<sup>4</sup> Proportion of terminations performed at over 12 weeks gestation not shown due to small numbers

## By method of termination

- since being licensed in 2008, the use of medical methods compared to surgical methods has increased
- medical abortions became the most common method of termination in 2016, and in 2017 accounted for 62% of all terminations

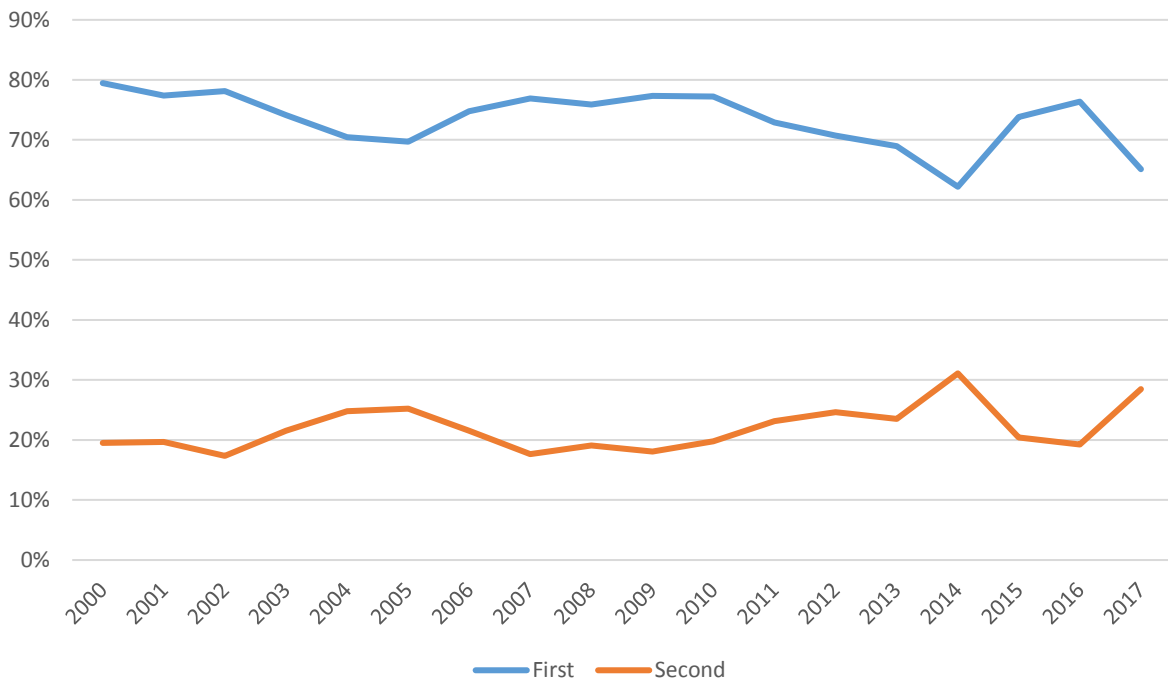
Figure 4 Proportion of T.O.P. by method of termination



## By number of previous terminations

- in 2017, for two thirds (66%) of women having a T.O.P. it was their first termination

Figure 5: The proportion of women having a T.O.P. by number of previous terminations<sup>5</sup>



<sup>5</sup> Proportion of terminations performed for those having 2 or more previous terminations not shown due to small numbers

## Appendix: Table A1

Total number of terminations, crude rate, distribution by gestation period, method and number of previous terminations, 2000-2017

All numbers have been rounded independently to the nearest 10

Numbers less than 10 have been suppressed to prevent disclosure

Year	Total number	Crude abortion rate <sup>6</sup>	Number of terminations by gestation Period			Number of terminations by method		Number of terminations by previous terminations	
			<10 Weeks	10-12 Weeks	13 or more weeks	Surgical (%)	Medical (%)	No previous terminations	At least one previous termination
2000	300	n/a	170	120	<10	290	<10	240	60
2001	310	15.3	160	150	<10	300	<10	240	70
2002	270	13.3	150	110	<10	260	<10	210	60
2003	230	11.7	140	90	<10	230	<10	170	60
2004	230	11.6	140	90	<10	230	<10	160	70
2005	220	11.0	150	70	<10	210	<10	150	70
2006	220	11.0	150	50	10	210	10	160	60
2007	220	11.1	160	70	<10	220	<10	170	50
2008	220	10.9	160	50	<10	200	20	170	50
2009	220	10.7	170	50	<10	170	40	170	50
2010	200	10.0	150	50	<10	170	30	160	50
2011	200	10.2	170	30	<10	130	80	150	60
2012	220	10.9	170	40	10	150	60	150	60
2013	190	9.5	160	30	<10	120	70	130	60
2014	160	8.4	140	20	<10	100	70	100	60
2015	190	9.7	160	30	<10	100	90	140	50
2016	180	9.2	160	20	<10	60	120	140	40
2017	170	8.7	120	40	<10	70	110	110	60

<sup>6</sup> Per 1,000 women aged 15-44 years

## Appendix: Table A2

Age specific rates of termination 2000-17 (3-year averages)

*Due to small numbers, three years of data have been combined to calculate the age specific rates*

3-year period	Under 20 yrs	20-24 yrs	25-29 yrs	30-34 yrs	35-39 yrs	40-44 yrs
2001-03	20.0	25.1	17.6	12.5	8.5	2.7
2002-04	17.9	23.6	14.0	11.1	9.3	2.5
2003-05	15.6	22.3	15.7	9.7	8.3	2.1
2004-06	15.6	21.5	16.2	8.6	7.6	2.7
2005-07	16.7	20.6	16.6	8.3	6.5	2.8
2006-08	16.2	21.0	14.1	9.2	6.7	3.6
2007-09	15.5	21.5	14.4	10.3	5.4	3.1
2008-10	13.1	21.6	14.0	10.1	5.5	3.3
2009-11	12.3	20.2	14.4	9.8	6.1	2.9
2010-12	10.7	19.4	15.8	9.3	7.2	3.3
2011-13	9.9	18.9	15.3	10.1	7.2	2.8
2012-14	8.3	17.8	15.7	9.0	6.5	2.7
2013-15	7.2	17.7	14.9	8.8	5.7	3.0
2014-16	6.1	16.5	15.6	8.3	6.4	3.2
2015-17	5.8	16.5	13.6	9.8	7.5	3.1